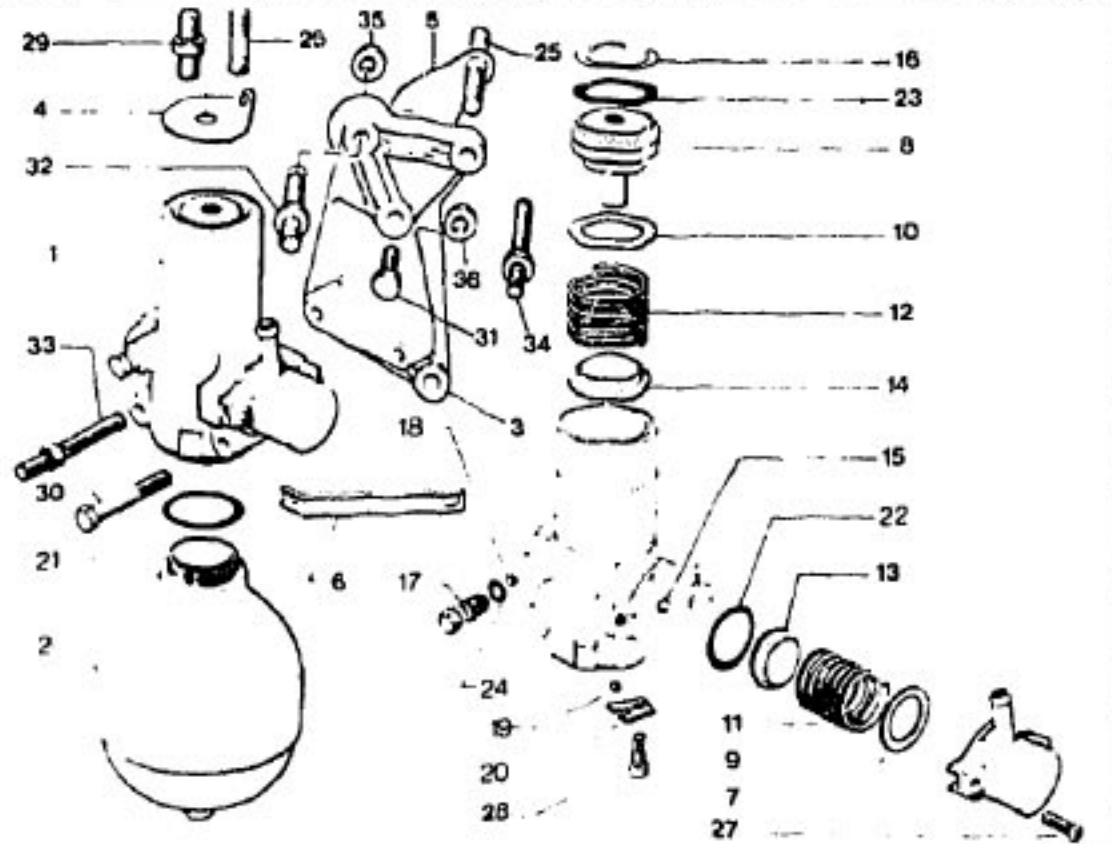


2193  
3-391-30  
P-07 ↑

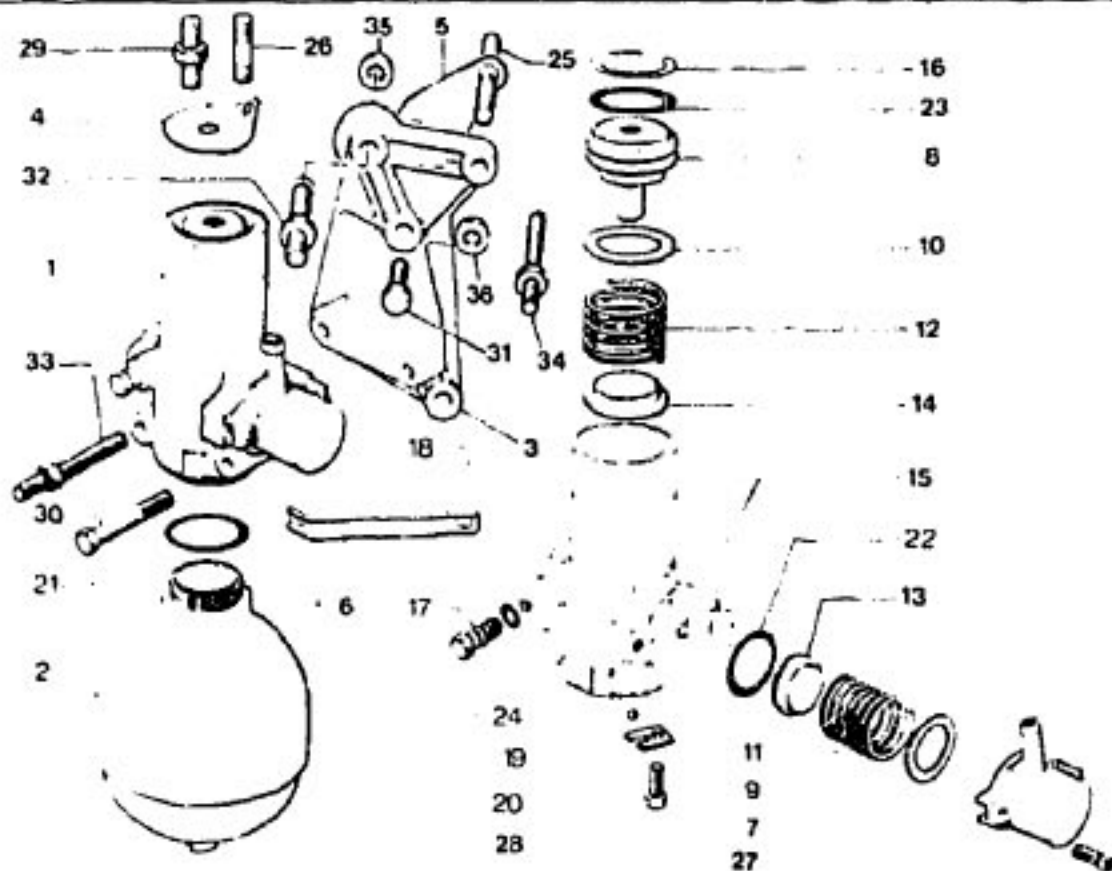
**CONJONCTEUR - SUPPORTS - ACCUMULATEUR**  
**DRUCKREGLER - TRAEGER - DRUCKSPEICHER**  
**PRESSURE REGULATOR - BRACKETS - ACCUMULATOR**  
**CONJUNTOR - SOPORTE - ACUMULADOR**  
**CONGIUNTORE - SUPPORTI - ACCUMULATORE**



I	NUMEROS	K	DESIGNATIONS
1	3MA 95 549 648 RP 95 588 686	1	<b>CONJONCTEUR COMPLET</b> KOMPLETTER DRUCKREGLER COMPLETE PRESSURE REGUL. CONJUNTOR COMPLETO CONGIUNTORE COMPLETO
2	3MA 95 547 944 RP 95 588 683	1	BV AUTO
	3MA 5 437 354	1	REP 62
			<b>ACCUMULATEUR</b> DRUCKSPEICHER ACCUMULATOR ACUMULADOR ACCUMULATORE

3	3MA 5 467 552	1	SAUF «X»	SUPPORT TRAEGER BRACKET SOPORTE SUPPORTO
	3MA 5 485 640	1	BV 5	-
	3MA 95 548 884	1	BV AUTO	-
4	3MA 5 467 551	1		-
	3MA 5 469 223	1	CLIMAT	-
	3MA 95 538 832	1	CLIMAT - DI	-
	RP 95 581 264	1		-
	9MA 95 581 264	1	DI TURBO - CLIMAT	-
	3MA 5 485 641	1	BV 5	-
	3MA 5 504 703	1	CLIMAT - BV 5	-
	3MA 75 518 625	1	«X»	-
	3MA 95 546 885	1	BV AUTO	-
5	3MA 5 467 915	1	SAUF «X»	CALE RÉGLAGE SUPPORT EINSTELLSCHEIBE F. TRAEGER ADJUSTING SHIM F. BRACKET SUPLEMENTO DE SOPORTE SPESSORE PER SUPPORTO
	3MA 5 485 643	1	BV 5	-
6	3MA 5 476 144 - NFP	1	LON - ENT 139.6 SAUF «X»	TIRANT STREBE TENSIONER TIRANTE TIRANTE LOGEMENT LAGERUNG SEATING ALOJAMIENTO ALLOGGIAMENTO
7	3MA 5 412 800 RP 95 577 401	1		-
	3MA 95 611 213		BV AUTO RM 95 507 943	-
8	3MA 95 412 542	1	φ EXT 34 - H 45	BOUCHON DECKEL COVER TAPON TAPPO CALE EINSTELLSCHEIBE SHIM SUPLEMENTO SPESSORE
9	3MA 5 420 596	7	21 x 28 x 0,3	RESSORT FEDER SPRING MUELLE MOLLA
10	3MA 5 412 540	7	24,5 x 32 x 0,7	-
	3MA 5 420 595	7	24,5 x 32 x 0,7	-
11	3MA 5 412 798	1	φ LAI 20	COUELLE TELLER CUP COPELA SCODELLINO
12	3MA 5 412 538	1	φ EXT 32	-
13	3MA 5 412 797	1	φ EXT 25,5	-
14	3MA 5 412 538	1	φ EXT 32 - E 9	-

2193 **CONJONCTEUR - SUPPORTS - ACCUMULATEUR (Suite)**  
**DRUCKREGLER - TRAEGER - DRUCKSPEICHER (Forts.)**  
**3-391-30 PRESSURE REGULATOR - BRACKETS - ACCUMULATOR (Cont.)**  
**CONJUNTOR - SOPORTES - ACUMULADOR (Cont.)**  
**P-08 ↑ CONGIUNTORE - SUPPORTI - ACCUMULATORE (Cont.)**

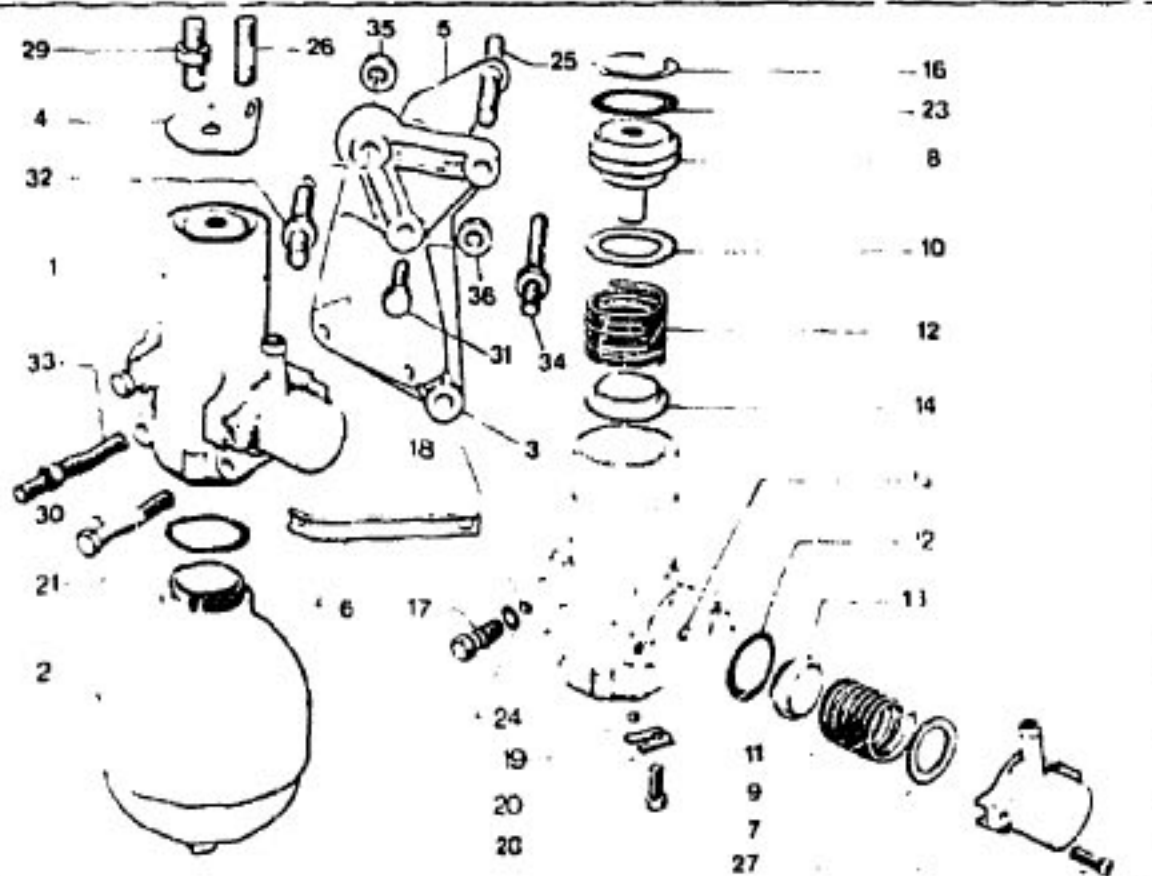


2197

3 391.30

I	NUMEROS		K	DESIGNATIONS
15	3MA	5 416 868	1	JONC SICHERUNGSRING CIRCLIP RETEN ARRESTO ELASTICO
16	3MA	5 412 537	1	✓ 38 - NFP
17	3MA	5 412 801	1	LON 28 VIS DE PURGE ENTLUEFTUNGSSCHRAUBE BLEED SCREW TORNILLO DE VACIADO VITE DI SPURGO
18	9TT	22 709 009	1	φ 7 BILLE KUGEL BALL BOLA SFERA
19	9DA	22 707 009	1	φ 6
20	3MA	5 412 543 - NFP	1	BARRETTE KUGELSITZ SEATING PLATE PLAQUETA ASIENTO PIASTRINA SEDE JOINT TORIQUE RINGDICHTUNG RING SEAL JUNTA TORICA GOMMINO
21	9DA	24 821 009 RP 95 630 952	1	37,5 x 42,4 x 2,45
22	9DA	24 880 009	1	33,2 x 37 x 1,9
23	9TT	24 881 009	1	29 x 34,4 x 2,7
24	9TT	24 890 009	1	6,7 x 10,5 x 1,9
25	3MA	26 162 309	3	φ 10 x 1,25 - 45 GOUJON STEBBOLZEN STUD ESPARRAGO PRIGIONIERO
26	6MA	26 165 389	2	φ 10 x 1,25 - 107 BV 5
27	5GX	26 214 429	2	φ 7 x 1,00 - 32 BV 5 - BV AUTO CHC 5 x 16 RMP 24 535 019 7/82
28	9GX	79 03 201 012	1	TH 5 x 14
29	9CA	79 03 101 771	1	TH 7 x 20 - BL DNA
30	3MA	26 212 819	1	COL 7 x 1,00 - 15 - 20 BL DA - BK «X» BV AUTO
31	9TT	79 03 001 535	1	TH 7 x 75 VIS SCHRAUBE SCREW TORNILLO VITE
32	9VB	23 452 319	1	TH 7 x 70 - «X»
33	9BF	23 728 019 - NFP	2	BV AUTO
34	3MA	79 03 001 845	2	TH 7 x 65 - (S) TH 8 x 40 - BV AUTO NFP
35	9VD	23 834 019	1	TH 9 x 50
36	9MA	79 03 201 033	1	TH 8 x 22 - BV AUTO
37	3MA	RP 79 03 201 663	1	COL 10 x 1,50 - 60 «X»
38	3MA	79 03 027 990	1	7 x 1,00 - 13
39	3MA	RP 79 03 027 322	1	COL 7 x 1,00 - 15 - 65
40	1GX	5 420 597	1	COL 7 x 1,00 - 17 - 70
41	3MA	26 212 639	1	COL 8 x 1,25 - 40 - 15
42	3MA	79 03 027 968	1	BV AUTO

2193 CONJONCTEUR - SUPPORTS - ACCUMULATEUR (Suite)  
 DRUCKREGLER - TRAEGER - DRUCKSPEICHER (Forts.)  
 3-391-30 PRESSURE REGULATOR - BRACKETS - ACCUMULATOR (Forts.)  
 P-09 ↑ CONJUNTOR - SOPORTES - ACUMULADOR (Cont.)  
 CONGIUNTORE - SUPPORTI - ACCUMULATORE (Cont.)



2192

3 391 30

I	NUMEROS	K	DESIGNATIONS
35	9TT 79 03 032 247	1	HE 9 x 1.25 ÉCROU MUTTER NUT TUERCA DADO
	9TT 79 03 032 012 RP 79 03 032 036	1	HE 7 x 1,00 «X»
36	9TT 79 03 032 222	3	HE 10 x 1.25

2	3MA	5 451 376	1	RFP 62
3	3MA	5 485 644	1	BV 5 - (S)
4	3MA	5 J/6 R36	1	BL - DNA (S) - NFP
	3MA	5 485 645	1	EMBAUT (S)
	3MA	95 543 906	1	BV 5 - (S) «X» (S) NFP

GE  
Cr-300

PIECES SPECIALES  
 SPEZIALTEILE  
 SPECIAL PARTS  
 PIEZAS ESPECIALES  
 PEZZI SPECIALI  
 ACCUMULATEUR  
 DRUCKSPEICHER  
 ACCUMULATOR  
 ACUMULADOR  
 ACCUMULATORE  
 SUPPORT  
 TRAEGER  
 BRACKET  
 SOPORTE  
 SUPPORTO