

3-394-10

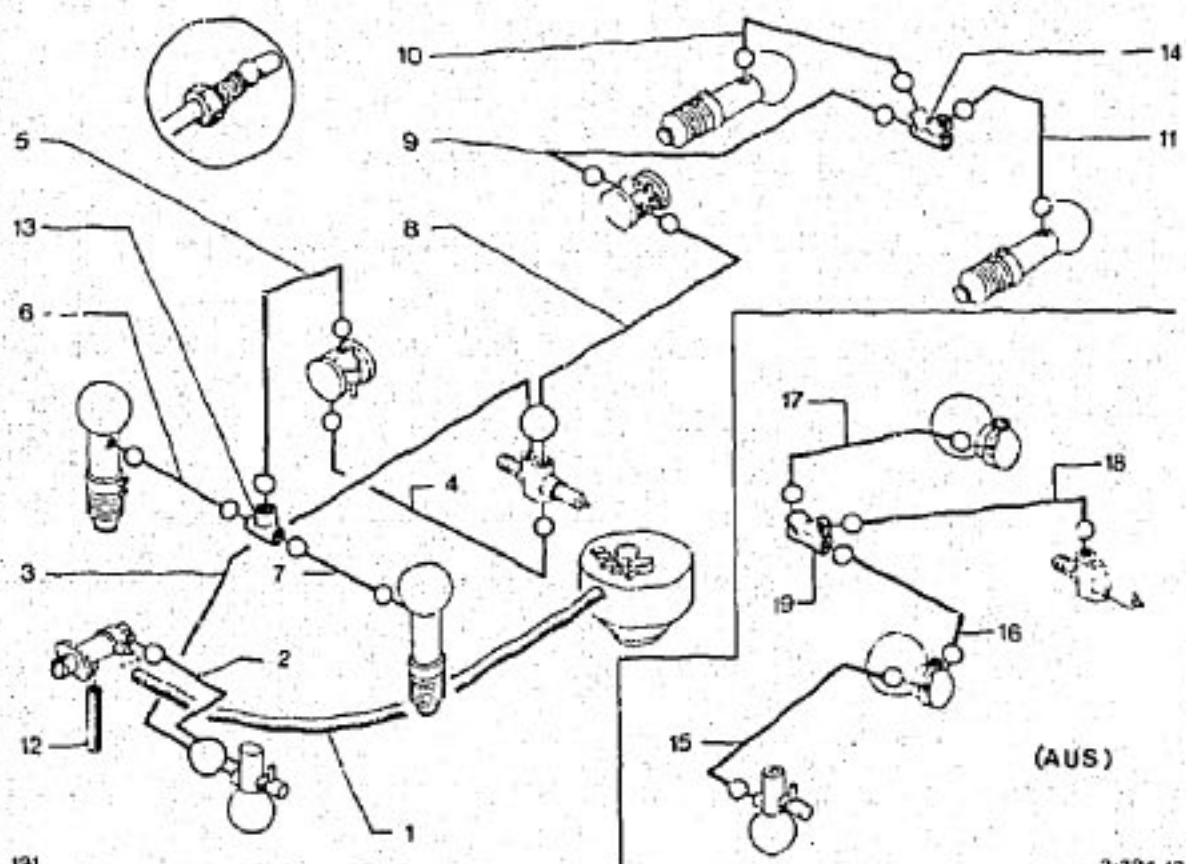
N-08

LEITUNGEN F. FEDERUNG

SUSPENSION PIPING

CANALIZACIONES DE SUSPENSION

CANALIZZAZIONI DELLA SOSPENSIONE



I	NUMEROS	K	BL - DNA	DESIGNATIONS
1	3MA 79 05 026 935	1	LON 950 1/78 ▶ RMP 5 449 582 LON 1000)	TUBE CAOUTCHouc GUMMIROHR MIT HUELSE SHEATHED RUBBER PIPE TUBO DE CAUCHO CON VAINA TUBO DI GOMMA CON GUAINA
2	3MA 5 475 313	1	φ 6,35 4/75 ▶ RMP	TUBE ROHR PIPE TUBO TUBO
	3MA 5 471 927 3MA 5 457 243	1 1	EMBAUT CLIMAT - (AUS)	- -

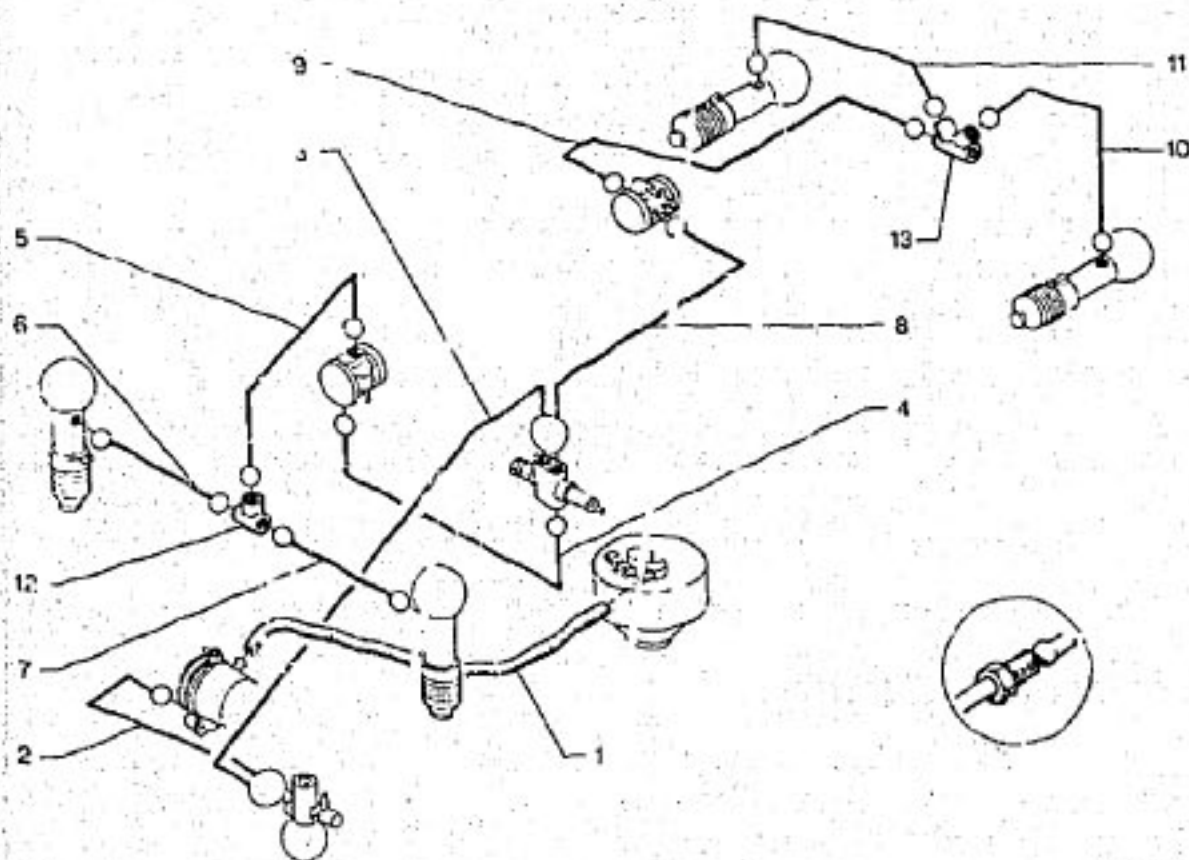
3	3MA 5 485 101	1	φ 4,5 12/76 ▶ RMP	TUBE ROHR PIPE TUBO TUBO
	3MA 5 457 244	1	CLIMAT ▶ 12/76	-
	3MA 5 485 099	1	CLIMAT 12/76 ▶	-
4	3MA 5 473 161	1	φ 3,5 11/76 ▶ RMP DEO 1 - 5 473 162	TUBE ROHR PIPE TUBO TUBO
5	3MA 75 526 821	1	RMP 7/78 ▶	-
6	3MA 5 450 448	1	-	-
7	3MA 5 450 449	1	▶ 6/77	-
	3MA 5 509 113	1	6/77 ▶	-
8	3MA 5 450 445	1	-	-
	3MA 5 450 453	1	-	-
10	3MA 5 450 454	1	-	-
11	3MA 5 450 455	1	-	-
12	3MA 26 234 579 RP 26 235 189	1	6 x 8 x 750 (RILSAN)	TUBE ROHR PIPE TUBO TUBO
13	4GX 5 438 353	1	3 φ 8 x 125	RACCORD 3 VOIES DREIWEGERVERBINDUNG THREE-WAY UNION RACOR DE 3 BOCAS RACCORDO A 3 VIE
14	4GX 75 515 738	1	4 φ 8 x 125 6/78 ▶ RMP	RACCORD 4 VOIES VIERWEGERVERBINDUNG FOUR WAY UNION RACOR DE 4 BOCAS RACCORDO A 4 VIE
			XT	PIECES SPECIALES SPEZIALTEILE SPECIAL PARTS PIEZAS ESPECIALES PEZZI SPECIALI
1	3MA 26 232 299	1	LON 850 - PO	TUBE CAOUTCHouc GAINÉ GUMMIROHR MIT HUELLE SHEATHED RUBBER PIPE TUBO DE CAUCHO CON VAINA TUBO DI GOMMA CON GUAINA
2	3MA 5 475 295	1	φ 6,35 - PO 4/75 ▶ RMP	TUBE ROHR PIPE TUBO TUBO
	3MA 5 507 693	1	PRECLI (AUS) ▶ 6/78	-
	3MA 75 522 211	1	PRECLI (AUS) 6/78 ▶	-
3	3MA 5 489 461	1	φ 4,5 (S) 11/76 ▶ RMP	TUBE (RILSANISÉ) ROHR PIPE TUBO TUBO

CANALISATIONS - ALIMENTATION - SUSPENSION
 ZUFUHRLEITUNGEN F. FEDERUNG
 SUPPLY SUSPENSION PIPING
 CANALIZACIONES DE ALIMENT. SUSPENSION
 CANALIZZAZIONI ALIMENTAZIONE SOSPENSIONE

11/86

3-394-11

N-06



191

3-394-11

5	3MA	75 528 821	1		7/78 ▶	
6	3MA	5 450 448	1			
7	3MA	5 450 449	1		▶ 6/77	
	3MA	5 509 113	1		6/77 ▶	
8	3MB	5 478 327	1			
9	3MA	5 450 453	1			
10	3MA	5 450 455	1			
11	3MA	5 450 454	1			
12	4GX	5 438 353	1	3φ8 x 125		RACCORD 3 VOIES DREIWEGERBINDUNG THREE-WAY UNION RACOR DE 3 BOCAS RACCORDO A 3 VIE
13	4GX	75 515 788	1	4φ 8 x 125 RMP	6/78 ▶	RACCORD 4 VOIES VIERWEGERBINDUNG FOUR-WAY UNION RACOR DE 4 BOCAS RACCORDO A 4 VIE
				XT		PIECES SPÉCIALES SPEZIALTEILE SPECIAL PARTS PIEZAS ESPECIALES PEZZI SPECIALI
1	3MA	26 235 429 RP 26 232 299	1	CC (S) (N) (CH) (NL)		TUBE ROHR PIPE TUBO TUBO
2	3MA	5 474 505	1	φ 6,35 (S)		
3	3MA	5 489 461	1	φ 4,5 (S) RMP	11/76 ▶	— (RILSANISÉE)
4	3MA	5 473 161	1	φ 3,5 - DAD		
8	3MB	5 489 456	1	φ 3,5 - (S) RMP	11/76 ▶	— (RILSANISÉE)
9	3MA	5 471 259	1			
10	3MA	5 471 267 RP 95 605 400	1			
11	3MA	5 471 260	1			

I	NUMEROS	K	OR - DNA	DESIGNATIONS
1	3MA 26 232 299	1	CC L/IN 850	TUBE ROHR PIPE TUBO TUBO
2	3MA 5 475 295	1	φ 6,35	—
3	3MA 5 489 461	1	φ 4,5 12/76 ▶	—
4	3MA 5 473 161 RP 95 539 299	1	φ 3,5 11/76 ▶ RMP DEO 5 473 162	—

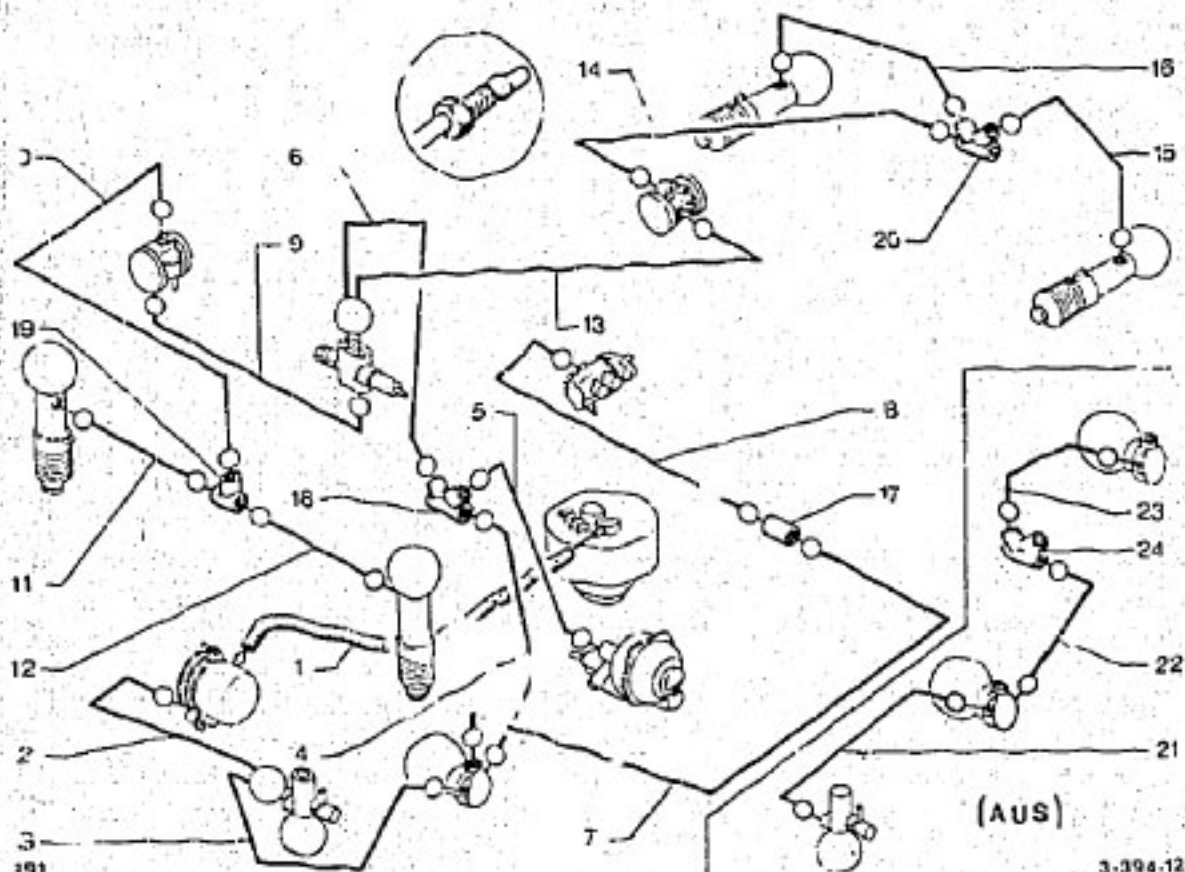
191

CANALISATIONS - ALIMENTATION - SUSPENSION
 ZUFUHRLEITUNGEN F. FEDERUNG
 SUPPLY SUSPENSION PIPING
 CANALIZACIONES DE ALIMENTACION SUSPENSION
 CANALIZZAZIONI ALIMENTAZIONE SOSPENSIONE

11/86

3-394-12

N-05



3-394-12

I	NUMEROS	K	GA	DESIGNATIONS
1	3MA 26 232 299	:	LOH 850	TUBE CAOUTCHOUC GUMMIROHR RUBBER PIPE TUBO CAUCHO TUBO GOMMA
	3MA 26 235 429 RP 26 232 299	1 1 1	PRESTIGE CLIMAT (S) (N) (CH) (NL) (J) DAD	-
2	3MA 5 467 145	1		φ 6,35 RM 5 475 295
3	3MA 75 522 211	1		CLIMAT 6/78 ▶ RMP
3	3MA 5 481 275 RP 95 564 588	1		φ 4,5 - LON 1,020
4	3MA 75 514 836	1		CLIMAT - RMP 11/77 ▶ RMP 12/76 ▶
5	3MA 5 485 103 RP 95 548 405 DEO : 95 548 406	1		8V 5
6	3MA 5 473 460	1		
6	3MA 5 503 356	1		
7	3MA 5 450 478	1		
7	3MA 95 542 756 RP 95 595 113 DEO : 95 548 405	1		φ 3,5 - RMP 3/77 ▶
8	3MA 5 505 735	1		3/77 ▶ RM 5 478 286
9	3MA 5 473 161 RP 95 539 860	1		RMP 11/74 ▶ DEO 1-5 473 162
10	3MA 75 526 821	1		RMP 7/78 ▶
11	3MA 5 450 448	1		
12	3MA 5 509 113	1		6/77 ▶
13	3MA 5 460 445	1		RMP 5 450 449
14	3MA 4 478 327	1		BL
15	3MA 5 450 453	1		BK - PRESTIGE
16	3MA 95 605 399	1		Rm 5 450 455
17	3MA 5 450 454	1		
17	3MA 5 447 189	1		2 φ 8 x 125
18	3MA 5 473 402	1		3 φ 9 x 125
19	4GX 5 438 353	1		3 φ 8 x 125
20	4GX 75 515 788	1		4 φ 8 x 125 6/73 ▶ RMP

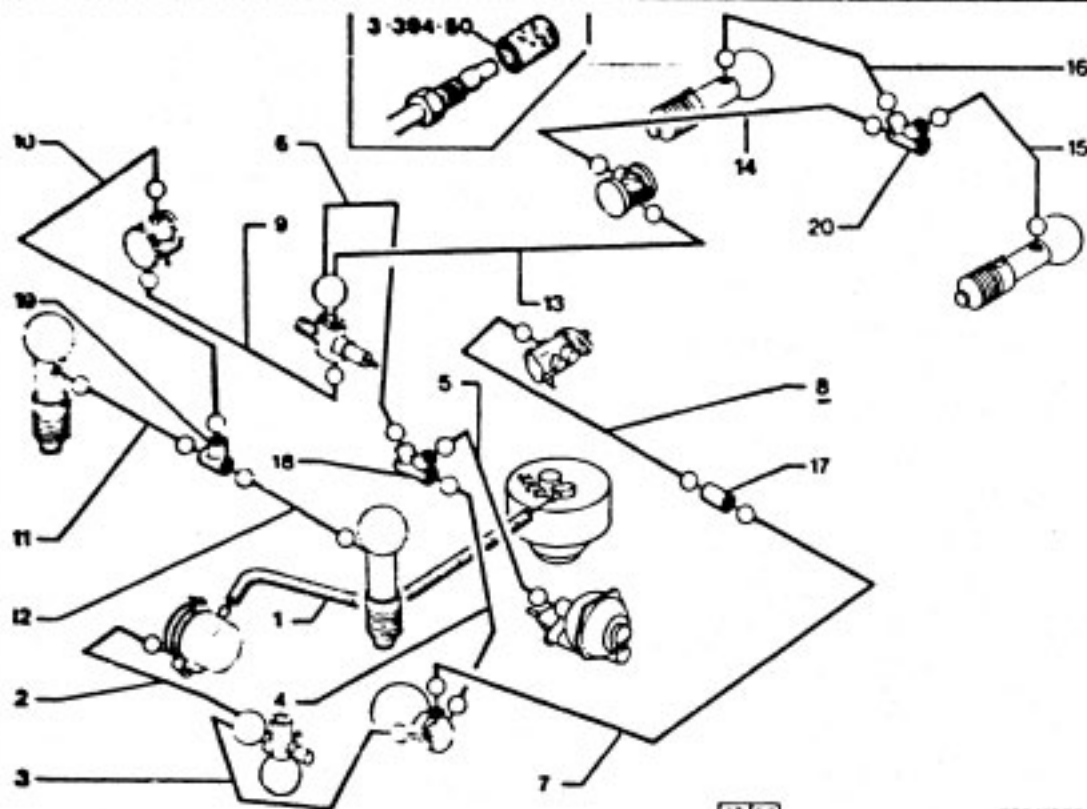
TUBE
ROHR
PIPE
TUBO
TUBOTUBE
ROHR
PIPE
TUBO
TUBOTUBE
ROHR
PIPE
TUBO
TUBO

RACCORD 2 VOIES
 2-WEGEVERBINDUNG
 2-WAY UNION
 RACOR DE 2 BOCAS
 RACCORDO A 2 VIE

RACCORD 3 VOIES
 DREIWEGEVERBINDUNG
 THREE-WAY UNION
 RACOR DE 3 BOCAS
 RACCORDO A 3 VIE

RACCORD 4 VOIES
 VIERWEGEVERBINDUNG
 FOUR-WAY UNION
 RACOR DE 4 BOCAS
 RACCORDO A 4 VIE

CANALISATIONS ALIMENTATION SUSPENSION
 ZUFUHRLEITUNGEN F. FEDERUNG
 SUPPLY SUSPENSION PIPING
 CANALIZA. DE ALIMENTACION DE SUSPENSION
 CANALIZZAZIONE ALIMENTAZIONE SOSPENSIONE



[12/90]

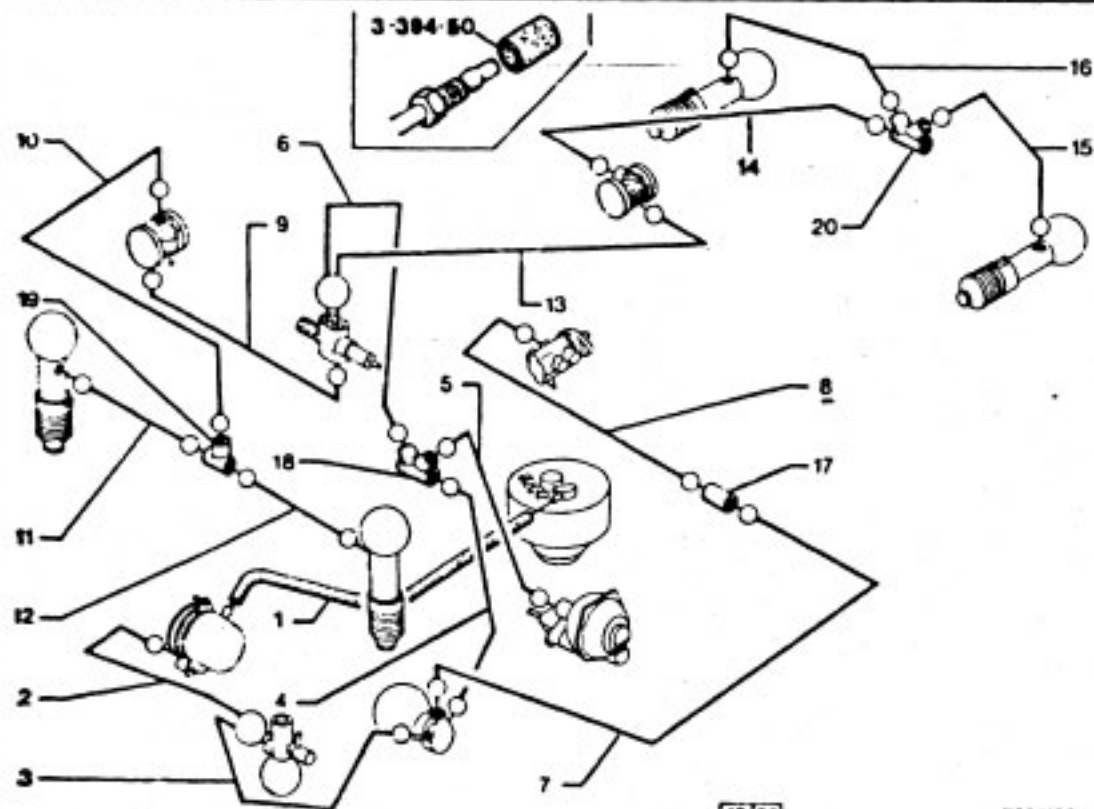
X3941050
 XJ941U5U

BERLINE SAUF (S)

01	95 623 775	01 LON 860 DIAM EXT 18 -2.5L -BVM	TUBE ROHR HYDRAULIC TUBE TUBO HIDRAULICO TUBO IDRAULICO
	79 05 026 984	01 DIAM INT 11ET13-1220 -2L -BVM -2.2L -BVM	-
	79 05 026 926	01 LON 940 -BVA	-
02	5 467 145	01 DIAM 6,35 LON 535 -2.5L -BVM	-

02	75 523 100	01 LON 535 -2L -BVM -2.2L -BVM	TUBE ROHR HYDRAULIC TUBE TUBO HIDRAULICO TUBO IDRAULICO
	95 544 401	01 DIAM 6,35-730 -CLIMATISEUR	-
	95 548 401	01 DIAM 6,35-650 -BVA	-
03	95 599 224	01 LON 1044 -2L -2.2L	-
	95 599 222	01 DIAM 4,5 LON 1020 -2.5L -BVM	-
	95 599 223	01 DIAM 4,5 LON 950 -ESSENCE -2.5L -CLIMATISEUR	-
	95 599 225	01 LON 940 -GAZOLE -CLIMATISEUR -BVM4	-
	95 599 227	01 DIAM 4,5 LON 1155 -GAZOLE -CLIMATISEUR -BVM5	-
	95 599 226	01 DIAM 4,5 LON 1125 -BVA	-
04	95 548 405	01 LON 1075	-
05	5 473 460	01 LON 380 -BVM4	-
	5 503 356	01 LON 380 -BVA -BVM5	-
06	5 450 478	01 LON 640	-
07	95 595 113	01 DIAM 3,5 LON 1155	-
08	95 578 838 RP 95609022	01 LON 575 -CAG	-
09	95 539 860	01 DIAM 3,5 LON 820	-
10	75 526 821	01 DIAM 3,5 LON 590 -2.5L	-
11	5 450 448	01 DIAM 3,5 LON 410 -2.5L	-

CANALISATIONS ALIMENTATION SUSPENSION
ZUFUHRLEITUNGEN F. FEDERUNG
SUPPLY SUSPENSION PIPING
CANALIZA. DE ALIMENTACION DE SUSPENSION
CANALIZZAZIONE ALIMENTAZIONE SOSPENSIONE



BERLINE SAUF (S)

11	75 522 281	01 LON 480 -2L -2,2L	TUBE ROHR HYDRAULIC TUBE TUBO HIDRAULICO TUBO IDRAULICO
12	5 509 113	01 LON 800	-
13	5 450 445	01 DIAM 3,5 LON 2980	-
14	5 450 453	01 DIAM 3,5 LON 300	-
15	95 605 399	01 DIAM 3,5 LON 975	-

16	5 450 454	01 DIAM 3,5 LON 590	TUBE ROHR HYDRAULIC TUBE TUBO HIDRAULICO TUBO IDRAULICO
17	5 447 189	01 AV 2 DIAM 8X1,25	RACCORD 2 VOIES 2WEGEVERBINDUNG PIPE 2WAY UNION RACOR 2 VIAS RACCORDO 2 VIE
18	5 473 402	01 3 DIAM 9X125	RACCORD 3 VOIES 3WEGEVERBINDUNG PIPE 3WAY UNION RACOR 3 VIAS RACCORDO 3 VIE
19	5 438 353	01 AV 3 DIAM 8X1,25	-
20	75 515 788	01 AR 4 DIAM 8X1,25	RACCORD 4 VOIES 4WEGEVERBINDUNG PIPE 4WAY UNION RACOR 4 VIAS RACCORDO 4 VIE
58	95 592 573 RP 95609022	01 LON 1080 -CAD	XT TUBE ROHR HYDRAULIC TUBE TUBO HIDRAULICO TUBO IDRAULICO